

**INTERNET TIMED ONLY**

**TERMS:** E-Transfer or Wire Transfer \*Letter of Guarantee to Register

# ANTIQU & COLLECTABLE CAR, TRACTOR & FARM EQUIPMENT AUCTION

## For Morris Anderson Estate

Kyle, Sk. (306) 491-7622

**LOCATION:** 4 miles South of Kyle on #4 Hwy., 9 miles West on Zion Lutheran Church Road (South Side) (GPS: N50.46.30; W108.14.37)

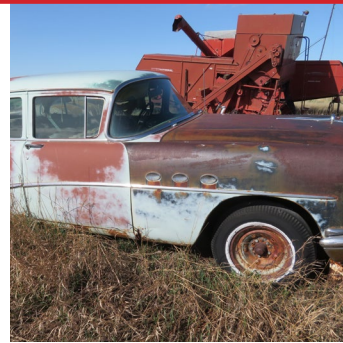
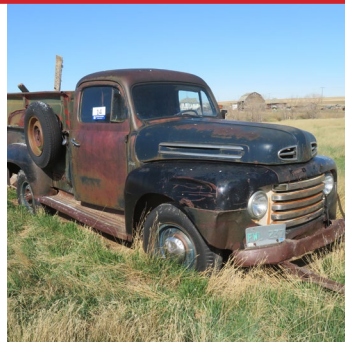
# MONDAY, JUNE 6, 2022



Prior viewing will be Friday June 3, 2022 from 12:00 Noon to 5:00 pm. & Saturday, June 4, 2022 from 9 am. to 4 pm. Phone Monica at (306) 491-7622 to book an appointment. There will be no attendance sale day or machinery pick-up. This auction will be "Online Bidding Only". No items will be released until paid in full. You will need to have a paid invoice to pickup your purchases. There will be a tractor on site to load items from Friday, June 10, 2022 to Sunday, June 12, 2022. Items to be removed by June 20, 2022. Go to [switzerauction.ca](http://switzerauction.ca) to register for this auction. Bidding will open on May 30, 2022 and be a soft close on June 6, 2022 at 11:00 a.m. local time. There will be a 3.5% Buyers Premium plus taxes added to your invoice.

Starting at 11:00 a.m. C.S.T.

[www.switzerauction.ca](http://www.switzerauction.ca)



### COLLECTABLE TRUCKS

**1970 Dodge 200 Powerwagon Truck**, S/N E24BE05135447 (Tan) (No motor)

**1953 Ford F-600 Grain Truck**, flat head 8 motor, S/N MCC83BHQ16718 (Blue) (not running)

**Ford 3-Ton Grain Truck**, wood box (Red) (not running)

**1969 IH Loadstar 1700 Grain Truck**, 8' x 16' box & hoist, S/N 416070C042163 (Red) (not running)

**1967 IH 5-Ton Tandem Grain Truck**, tag axle, 8' x 18' steel box, S/N 456800C006650 (Yellow) (not running)

**1975 IH 150 Truck**, S/N E0130EHB25566 (Tan) (not running)

**1972 IH 1110 Truck**, S/N 133108H105508 (not running)

**1967 IH 1200 Truck**, S/N 613250C011314 (Blue) (not running)

**1967 IH Truck**, 6 cyl. motor, S/N 71310BC021714 (Red) (not running)

**1966 IH 1100 Truck**, S/N CW6399748 (Red) (not running)

**1965 IH 1100 Truck**, 6 cyl. motor, S/N CW40920A6 (Silver) (not running)

**1965 IH Truck**, 6 cyl. motor, S/N CW5474946 (Red) (not running)

**1952 IH L-110 Step Side Truck**, (Blue & White) (not running)

**1951 IH L10 Truck**, (Green) (not running)

**IH 110 Truck**, has motor, S/N CW11757A6 (Brown & White) (not running)

**IH 110 Truck**, S/N CW8064A8 (Red) (not running)

**1977 Ford F250 Custom Truck**, has motor S/N F25HCZ07760 (Blue) (not running)

**1950 Ford F68 1-Ton Truck**, S/N DF3H5071715 (Black) (not running)

**1949 Ford M-58 Truck**, (not running)

**1949 Mercury M-155 Truck**, S/N SM81H4914295 (Red) (not running)

**1949 Mercury M47 Truck**, no motor, S/N MD83115013983 (Red)

**Mercury M-47 Truck**, no motor (Brown) Gravel Box

### COLLECTABLE CARS & VANS

**1932 Pontiac 224 Car**, suicide doors, split back window (Black) (not running)

**1956 IH Travelall Van** (Blue & White) (not running)

**1974 Chev 20 Van**, S/N CG42544101122 (Blue) (not running)

**Vandura Van**, no motor, S/N GE205U156696 (Red)

**1977 Toyota Corolla 4-door car**, S/N TE31243561 (Blue) (not running)

**1974 Buick Lasabre Lumus 4-Door Car** (Brown) (not running)

**1971 Buick Lasabre 4-Door Car** (Blue) (not running)

**1954 Buick Special 4-Door Car** (Blue) (not running)

**1953 Buick Special 2-Door Car**, V8, (Green) (not running)

**1953 Buick 4-Door Car**, no motor (Blue)

**1953 Buick Special 4-Door Car** (Green) (not running)

**1953 Ford Mainline 4-Door Car** (not running) (Blue)

**1967 Chrysler Newport 4-Door Car** (Blue) (not running)

**1960 Pontiac Laurentian 4-Door Car** (Brown) (not running)

**Volkswagon 2-Door Car**, has motor, S/N 1773429140 (Yellow) (not running)

**1961 Pontiac Strato Chief 4-Door Car**, S/N 1716918005 (Black) (not running)

**Chev Biscayne 4-Door Car**, no motor (Brown & White)

### TRAILERS

**1973 24' Linden 5th Wheel Flat Deck Trailer**, sliding deck, tilts, tandem axle (Red) (No visible S/N) \***IH Truck Box Trailer** w/endgate (No visible S/N) \***Homebuilt Horse Trailer**, single axle (No Visible S/N)

### TRACTORS

**CCIL D13006-S Tractor**, 2 hyd., pto, 20.8 x 38 back tires, 4 rib frt. tires, 130 eng. hp. (not running) \***CCIL Volvo 800 Tractor**, 2 hyd., 540 pto, 106 eng. hp. w/8' Ford Front Mount Blade (Sells as a unit) (not running)

### ANTIQU TRACTORS

**Oliver 88 Tractor**, belt pulley, 46 eng. hp., S/N 4-827534 (not running) \***Field Marshall Diesel Tractor**, air cooled, belt pulley, S/N 12111 (not running) \***Fordson Major Type 6 Tractor**, 42 eng. hp., S/N 1141189 (not running) \***1950 McCormick Deering WD9 Tractor**, 46 eng. hp., S/N WDCB51674W12B (not running) \***1952 JD R Diesel Tractor**, pup engine, 47 eng. hp. S/N 14900 (not running) \***IH Tractor for parts** \***McCormick WD9 Diesel Tractor** (not running) \***Fordson Major Tractor** (not running) \***Oliver Tractor w/FEL** (not running) \***McCormick Deering WD9 Diesel Tractor** (not running)

### FARM & LIVESTOCK EQUIP.

**JD 896 Side Delivery Rake** \***Allied Bale Stooker** \***Ezee On FEL** w/5' bucket \***2-MF 124 Sq. Balers** \***Straw Buncher** \***14' Cockshutt 247 Cult.** \***20' CCIL Cult.** \***JD 2-Bottom Plow** \***20' JD Rodweeder** \***16' IH Discer** \***35' x 6" Brandt Grain Auger** w/Koehler motor (not running) \***45' Harrow Drawbar**

### SHOP & YARD

**Antique Coca Cola Water Cooler** \***500 gal. Metal Water Tank** on metal skids \***Buzz Saw**

For further info call  
Monica at (306) 491-7622.



**Auctioneers Note:** Prior viewing will be Friday June 3, 2022 from Noon to 5:00 pm. & Saturday, June 4, 2022 from 9 am. to 4 pm. Phone Monica at (306) 491-7622 to book an appointment. There will be a tractor on site to load items from Friday, June 10, 2022 to Sunday, June 12, 2022. Items to be removed by June 20, 2022.

**MORE INFO ON FACEBOOK & OUR WEBSITE: [www.switzerauction.ca](http://www.switzerauction.ca)**

SALE MANAGED AND CONDUCTED BY

# SWITZER AUCTION SERVICE

Licensed and Bonded

"We Sell Anything • Anytime • Anywhere"

**BRUCE SWITZER**      **GLENN SWITZER**

Phone (306) 773-4200, Fax (306) 773-4241

Box 2062, Swift Current, SK S9H 4M7

Subject to additions or deletions

Management or Owner not responsible for accidents.

All sales final • no exchange • no returns. Not responsible for errors or omissions in printing of year, model, etc.



Bruce Switzer

SK. LIC.  
#914494



Glenn Switzer

AB. LIC.  
#313086

**INTERNET TIMED ONLY ANDERSON COLLECTABLE CAR, TRACTOR & FARM EQUIPMENT AUCTION - KYLE, SK.**